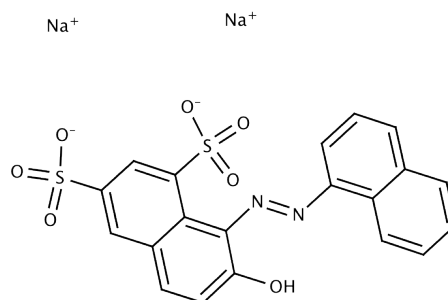


Product Specification

Product Name	Crystal Ponceau 6R (C.I. 16250)
Glentham Code	GT6539
CAS Number	2766-77-0
EINECS	220-441-4
MDL Number	MFCD00013279
Colour Index	16250
PubChem SID	310270558
Molecular Weight	502.43
Molecular Formula	C ₂₀ H ₁₂ N ₂ Na ₂ O ₇ S ₂
Storage Temp.	+20°C



Property	Specification
Physical Description	Dark red to dark brown powder
Solubility (0.1% in water)	Clear, red solution
Melting Point	≥ 300°C
Wavelength of Maximum Absorption (λ _{max})	509 - 514 nm (in water)
Loss on Drying	≤ 20.0%
Dye Content	≥ 75%

Specification Version	-	v1.0
Date Created	-	2015-09-03

Glentham Life Sciences confirm that the above referenced product conformed to the information displayed in this document on the quality release date. Please check www.glentham.com or contact us using the details above for the current version of this document.

This document was generated electronically and is therefore valid without signature. © Glentham Life Sciences Ltd, 2022