

## Product Datasheet

### GT8506 - Bromoxylenol Blue

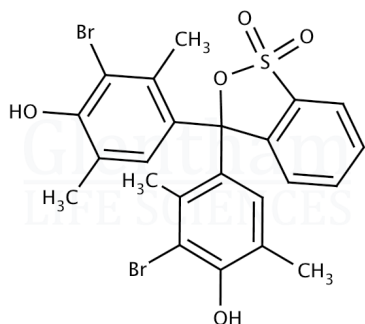
#### Product Details

Product Name	Bromoxylenol Blue
Glenthams Code	GT8506
CAS Number	40070-59-5
EINECS	254-780-4
MDL Number	MFCD00005873
PubChem SID	310269029
Related Categories	Biochemicals, Dyes & Stains

Solubility (0.1% in ethanol)	: Clear, orange or red to dark orange or dark red solution
pH Transition Range	: 5.7 - 7.4 (yellow to blue)
Wavelength(s) of Maximum Absorption	: $\lambda_{\text{max1}}$ : ~435nm, $\lambda_{\text{max2}}$ : ~614nm
Absorptivity (1%/1cm)	: $\geq 300$ ( $\lambda_{\text{max1}}$ , pH 5.7)
Absorptivity (1%/1cm)	: $\geq 500$ ( $\lambda_{\text{max2}}$ , pH 7.4)
Loss on Drying	: $\leq 5.0\%$ (110°C)
Version	: v1.0

#### Structure

Molecular Weight	: 568.27
Molecular Formula	: C <sub>23</sub> H <sub>20</sub> Br <sub>2</sub> O <sub>5</sub> S



#### About Bromoxylenol Blue

No further details on record.

#### Storage

Recommended storage temperature: +20°C.

#### Hazards and Transport

Not classified as hazardous under CLP.  
Not classified as dangerous for transport.

#### Glenthams Product Specification

Physical Description : Beige, brown, yellow-orange or purple powder

This document was generated electronically and is therefore valid without signature. © Glenthams Life Sciences Ltd, 2023