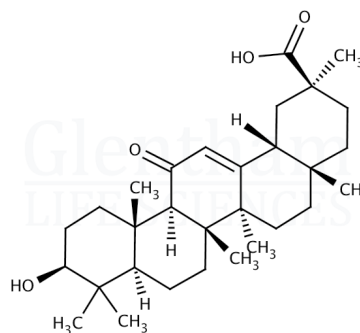


Certificate of Analysis

Product Name Enoxolone
Glentham Code GP8041
CAS Number 471-53-4
EINECS 207-444-6
MDL Number MFCD00003706
PubChem SID 310272560
Batch Number 310AEF

Molecular Weight 470.68
Molecular Formula $C_{30}H_{46}O_4$
Storage Temp. +20°C



Property	Specification	Batch 310AEF
Physical Description	White or almost white crystalline powder	Almost white powder
Identification	A, B, C according to EP	Conforms
Solubility (1% in ethanol)	Clear, colourless solution	Clear, colourless solution
Specific Optical Rotation	+145 - +154 °	+153.8°
Any Individual Impurity	≤ 0.7%	0.4%
Total Impurities	≤ 2.0%	0.8%
Heavy Metals	≤ 20ppm	Conforms
Sulphated Ash	≤ 0.2%	0.04%
Loss on Drying	≤ 0.5%	0.4%
Assay	98.0 - 101.0 % (dried basis)	100.1%
Pharmacopoeia Specification(s)	EP	Conforms

Specification Version v1.0
Manufacture Date 2022-05-07
Re-Test Date 2029-07-11

Glentham Life Sciences confirm that the above referenced product conformed to the information displayed in this document on the quality release date. Please check www.glentham.com or contact us using the details above for the current version of this document.

This document was generated electronically and is therefore valid without signature. © Glentham Life Sciences Ltd, 2025