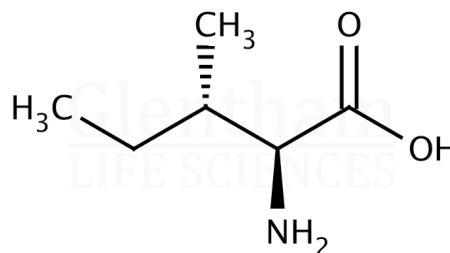


## Certificate of Analysis

Product Name	L-Isoleucine, GlenCell™, suitable for cell culture
Glentham Code	GM8967
CAS Number	73-32-5
EINECS	200-798-2
MDL Number	MFCD00064222
Batch Number	515HOS

Molecular Weight	131.18
Molecular Formula	$C_6H_{13}NO_2$
Storage Temp.	+20°C



Property	Specification	Batch 515HOS
Physical Description	White crystals or crystalline powder	White crystalline powder
Identification	IR	Conforms
Solubility (5% in 1M HCl)	Clear, colourless solution	Clear, colourless solution
Transmittance	≥ 98.0%	Conforms
Specific Optical Rotation	+39.5 - +41.5 °	+41.5 °
Chloride (Cl)	≤ 0.02%	Conforms
Ammonium (NH <sub>4</sub> )	≤ 0.02%	Conforms
Sulphate (SO <sub>4</sub> )	≤ 0.02%	Conforms
Iron (Fe)	≤ 10ppm	Conforms
Heavy Metals (as Pb)	≤ 10ppm	≤ 5ppm
Arsenic (As <sub>2</sub> O <sub>3</sub> )	≤ 1ppm	Conforms
Valine	≤ 0.3%	0.1%
Leucine	≤ 0.3%	0.0%
Any Unspecified Impurity	≤ 0.2%	0.0%
Total Impurities	≤ 1.0%	0.1%
Residue on Ignition	≤ 0.1%	0.03%
Loss on Drying	≤ 0.2%	0.00%
pH (10% in water)	5.5 - 6.5	6.2
Endotoxins	≤ 6.0EU/g	3.0EU/g
Assay	99.0 - 101.0 %	99.9%
Pharmacopoeia Specification(s)	EP, USP	Conforms
Origin	Non-animal origin	Conforms

Specification Version	v1.1
Manufacture Date	2021-06-30
Re-Test Date	2029-01-18

Glentham Life Sciences confirm that the above referenced product conformed to the information displayed in this document on the quality release date. Please check [www.glentham.com](http://www.glentham.com) or contact us using the details above for the current version of this document.

This document was generated electronically and is therefore valid without signature. © Glentham Life Sciences Ltd, 2025