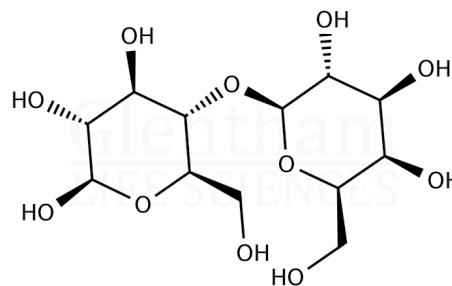


Certificate of Analysis

Product Name beta-Lactose
Glentham Code GC5831
CAS Number 5965-66-2
EINECS 227-751-9
MDL Number MFCD00064521
PubChem SID 310275677
Batch Number 868ZPX

Molecular Weight 342.30
Molecular Formula $C_{12}H_{22}O_{11}$
Storage Temp. +20°C



Property	Specification	Batch 868ZPX
Physical Description	White to off-white powder	White powder
Solubility (5% in water)	Clear, colourless solution	Conforms
Heavy Metals (as Pb)	≤ 5ppm	Conforms
Sulphated Ash	≤ 0.1%	0.0%
Loss on Drying	≤ 1.0%	0.1%
alpha-Lactose	≤ 30%	22%
beta-Lactose	≥ 70%	79%
Lactose	≥ 98%	≥ 99%

Specification Version v1.0
Manufacture Date 2017-03-07
Re-Test Date 2027-02-13

Glentham Life Sciences confirm that the above referenced product conformed to the information displayed in this document on the quality release date. Please check www.glentham.com or contact us using the details above for the current version of this document.

This document was generated electronically and is therefore valid without signature. © Glentham Life Sciences Ltd, 2025