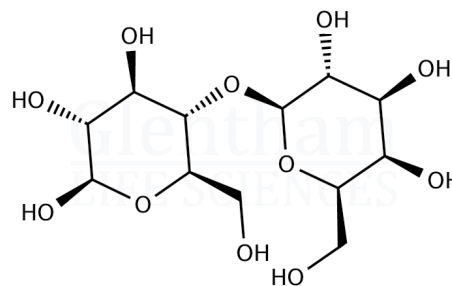


## Certificate of Analysis

Product Name beta-Lactose  
Glentham Code GC5831  
CAS Number 5965-66-2  
EINECS 227-751-9  
MDL Number MFCD00064521  
PubChem SID 310275677  
Batch Number 868ZPX

Molecular Weight 342.30  
Molecular Formula  $C_{12}H_{22}O_{11}$   
Storage Temp. +20°C



Property	Specification	Batch 868ZPX
Physical Description	White to off-white powder	White powder
Solubility (5% in water)	Clear, colourless solution	Conforms
Heavy Metals (as Pb)	≤ 5ppm	Conforms
Sulphated Ash	≤ 0.1%	0.0%
Loss on Drying	≤ 1.0%	0.1%
alpha-Lactose	≤ 30%	22%
beta-Lactose	≥ 70%	79%
Lactose	≥ 98%	≥ 99%

Specification Version v1.0  
Manufacture Date 2017-03-07  
Re-Test Date 2027-02-13

Glentham Life Sciences confirm that the above referenced product conformed to the information displayed in this document on the quality release date. Please check [www.glentham.com](http://www.glentham.com) or contact us using the details above for the current version of this document.

This document was generated electronically and is therefore valid without signature. © Glentham Life Sciences Ltd, 2024