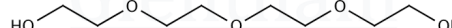


Certificate of Analysis

| | |
|---------------|--------------------------|
| Product Name | Polyethylene glycol 1500 |
| Glentham Code | GK2627 |
| CAS Number | 25322-68-3 |
| EINECS | 500-038-2 |
| MDL Number | MFCD00081839 |
| Batch Number | 233CJF |

| | |
|-------------------|--|
| Molecular Weight | 1,400 - 1,600 |
| Molecular Formula | $(-\text{CH}_2\text{CH}_2\text{O}-)_n$ |
| Storage Temp. | +20°C |



| Property | Specification | Batch 233CJF |
|---------------------------|--|----------------------------|
| Physical Description | White powder, crystals or flakes | White flakes |
| Solubility (10% in water) | Clear to faintly turbid, colourless solution | Clear, colourless solution |
| pH (5% in water) | 4.5 - 7.5 | 5.6 |
| Water | $\leq 1.0\%$ | 0.0% |
| Average Molecular Weight | 1400 - 1600 | 1467 |

| | |
|-----------------------|------------|
| Specification Version | v1.1 |
| Manufacture Date | 2021-12-18 |
| Re-Test Date | 2032-03-16 |

Glentham Life Sciences confirm that the above referenced product conformed to the information displayed in this document on the quality release date. Please check www.glentham.com or contact us using the details above for the current version of this document.

This document was generated electronically and is therefore valid without signature. © Glentham Life Sciences Ltd, 2024