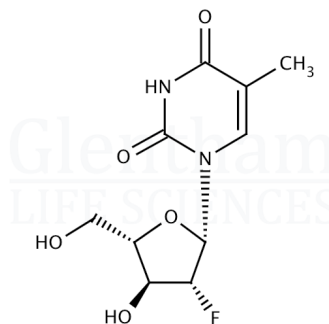


## Certificate of Analysis

|               |              |
|---------------|--------------|
| Product Name  | Clevudine    |
| Glentham Code | GP8280       |
| CAS Number    | 163252-36-6  |
| MDL Number    | MFCD00935785 |
| PubChem SID   | 310270388    |
| Batch Number  | 633COL       |

|                   |  |
|-------------------|--|
| Molecular Weight  | 260.22   |
| Molecular Formula | C <sub>10</sub> H <sub>13</sub> FN <sub>2</sub> O <sub>5</sub> |
| Storage Temp.     | -20°C  |



| Property             | Specification             | Batch 633COL |
|----------------------|---------------------------|--------------|
| Physical Description | White to off-white powder | White powder |
| Loss on Drying       | ≤ 1.0%                    | 0.5%         |
| Heavy Metals         | ≤ 20ppm                   | Conforms     |
| Purity (HPLC)        | ≥ 98.0%                   | 99.1%        |

|                       |            |
|-----------------------|------------|
| Specification Version | v1.0       |
| Manufacture Date      | 2015-08-26 |
| Re-Test Date          | 2020-09-16 |

Glentham Life Sciences confirm that the above referenced product conformed to the information displayed in this document on the quality release date. Please check [www.glentham.com](http://www.glentham.com) or contact us using the details above for the current version of this document.

This document was generated electronically and is therefore valid without signature. © Glentham Life Sciences Ltd, 2024