

Product Datasheet

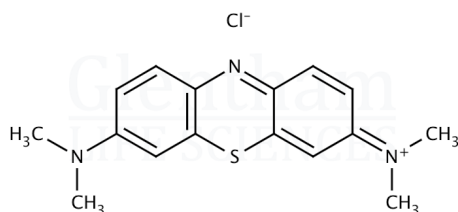
GT1060 - Methylene Blue, anhydrous (C.I. 52015)

Product Details

Product Name	Methylene Blue, anhydrous (C.I. 52015)
Glenthams Code	GT1060
CAS Number	61-73-4
EINECS	200-515-2
Index des couleurs	52015
Numéro MDL	MFCD00012111
PubChem SID	310276715
CAS supplémentaire	7220-79-3 ($\cdot 3H_2O$)
CAS supplémentaire	122965-43-9 ($\cdot xH_2O$)
Related Categories	Biochemicals, Dyes & Stains

Structure

Molecular Weight	: 319.85
Molecular Formula	: $C_{16}H_{18}ClN_3S$



CLP Classification

Skin Irr. 2, Acute Tox. 4,
STOT SE 3, Eye Irr. 2A

Signal Word

Attention

Hazard Codes

H315, H302, H335, H319

Precautionary Codes

P280, P302+P352,
P305+P351+P338, P261,
P301+P312

Pictograms



Glenthams Product Specification

Physical Description	: Dark green crystalline powder
Solubility (0.1% in water)	: Clear, blue to dark blue solution
Loss on Drying	: $\leq 8.0\%$ ($100^\circ C$, 1h)
Residue on Ignition	: $\leq 1.2\%$
Arsenic (As)	: $\leq 8ppm$
Copper (Cu) + Zinc (Zn)	: $\leq 0.02\%$
Assay	: 98.0 - 103.0 % (dried basis)
Identification (IR)	: To conform to standard
Version	: v1.1

About Methylene Blue, anhydrous (C.I. 52015)

Methylene blue is a synthetic dye first used in the textile industry. It is used as a biological stain, staining nucleic acids and other negatively charged cell components. Methylene blue has also been used in medicine as a treatment for methemoglobinemia and in aquaculture for treating fungal infections in fish.

Storage

Recommended storage temperature: $+20^\circ C$.

Hazards and Transport

Not classified as dangerous for transport.

This document was generated electronically and is therefore valid without signature. © Glenthams Life Sciences Ltd, 2025